



Data Erase Kit

Reference Guide

**If you are using the imageRUNNER ADVANCE series,
see the e-Manual that is included with the machine.**

Please read this guide before operating this product.
After you finish reading this guide, store it in a safe place for future reference.

ENG

Preface

Thank you for purchasing this Canon product.

The Data Erase Kit is an optional security product that enables you to completely erase data stored on the hard disk of your Canon MFP/Color MFP, hereinafter referred to as "the machine." Read this manual thoroughly and carefully before using this product. Please make sure to observe the statements described in this manual.

Screen shots of the touch panel display used in this manual are of a Color MFP. The screens displayed on your machine may differ according to the model of the machine and the optional equipment attached to it.



IMPORTANT

It is necessary to obtain and register a license key before using the Data Erase Kit. For information on obtaining and registering a license key, see the *Note Before Using This Product*.

Completely Erasing Unnecessary Data from the Hard Disk

If the Data Erase Kit is enabled, data is automatically and completely erased when it is deleted from the hard disk. This is to ensure that no trace of the data remains on the hard disk. You can select the Erase mode and timing for erasing data from the hard disk.

The following data is completely erased from the hard disk:

- Image data created when scanning
- Temporary data created when using the Remote or Cascade Copying mode
- Data that remained after you deleted a document in an inbox
- Sent and received fax/I-fax data
- Spooled data
- Data temporarily stored as print data



IMPORTANT

Depending on the model you are using, [Hard Disk Data Complete Erase Set.] may not be displayed. If you want to change the Erase mode and timing, consult your local authorized Canon dealer.



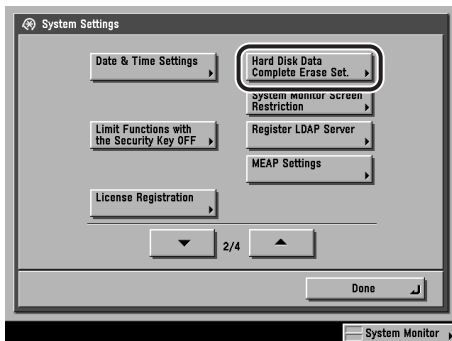
NOTE

- After the Data Erase Kit is enabled, it may take several minutes longer than is normal to start your machine, depending on the model of your machine, because the machine searches for and deletes any data remaining on the hard disk.
- You cannot use the machine while data is being erased from the hard disk. It may also take some time until the machine becomes ready to scan once the data is completely erased.
- The performance of the machine may degrade when processing jobs.

Setting the Timing for Erasing Data From the Hard Disk

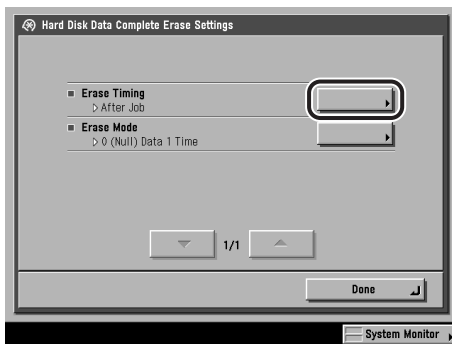
You can select whether to erase data from the hard disk while processing a job or after a job has completed.

- 1 Press **F10** (Additional Functions) → [System Settings] → [Hard Disk Data Complete Erase Set.].



If the System Manager ID and System Password have been set, enter the System Manager ID and System Password using **F10** - **F10** (numeric keys) → press **F10** (Log In/Out).

- 2 Press [Erase Timing].



IMPORTANT

Depending on the model you are using, some keys may not be displayed.

3 Select [During Job] or [After Job] → press [OK].

Details of each item are shown below:

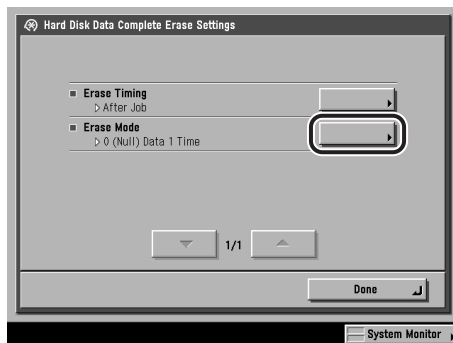
[During Job]: Overwrites and erases the data for each page as it is output.


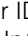

[After Job]: Overwrites and erases the data after all pages have been output.

Setting the Erase Mode

You can set the Erase mode and how many times to erase the data.

1 Press (Additional Functions) → [System Settings] → [Hard Disk Data Complete Erase Set.] → [Erase Mode].



If the System Manager ID and System Password have been set, enter the System Manager ID and System Password using  -  (numeric keys) → press .



IMPORTANT

Depending on the model you are using, some keys may not be displayed.

2 Select how many times to erase the data → press [OK].

Details of each item are shown below:

[0 (Null) Data 1 Time]: Overwrite the data once with 0 (null) data.

[Random Data 1 Time]: Overwrite the data once with random data.

[Random Data 3 Times]: Overwrite the data three times with random data.



NOTE

As you increase the number of times the data is erased, the performance of the machine when processing jobs may degrade.



CANON INC.

30-2, Shimomaruko 3-chome, Ohta-ku, Tokyo 146-8501, Japan

CANON U.S.A., INC.

One Canon Plaza, Lake Success, NY 11042, U.S.A.

CANON CANADA INC.

6390 Dixie Road Mississauga, Ontario L5T 1P7, Canada

CANON EUROPA N.V.

Bovenkerkerweg 59-61 1185 XB Amstelveen, The Netherlands

(See <http://www.canon-europe.com/> for details on your regional dealer)

CANON LATIN AMERICA, INC.

703 Waterford Way Suite 400 Miami, Florida 33126 U.S.A.

CANON AUSTRALIA PTY. LTD

1 Thomas Holt Drive, North Ryde, Sydney, N.S.W. 2113, Australia

CANON CHINA CO., LTD

15F Jinbao Building No.89 Jinbao Street, Dongcheng District, Beijing 100005, China

CANON SINGAPORE PTE. LTD.

1 HarbourFront Avenue #04-01 Keppel Bay Tower, Singapore 098632

CANON HONGKONG CO., LTD

19/F., The Metropolis Tower, 10 Metropolis Drive, Hunghom, Kowloon, Hong Kong