

How to Use
imagePROGRAF Firmware Update Tool
V3.21 (Mac OS)

1. Introduction

1.1 About the imagePROGRAF Firmware Update Tool

The imagePROGRAF Firmware Update Tool (hereinafter Firmware Update Tool) V3.21 is a software for performing firmware updates on your printer.

<Important>

Use this software if you are using the following operating systems.

- Mac OS X v10.2 to Mac OS X v10.5

If you are using a newer operating system than the above, download and use the latest version of the Firmware Update Tool for your operating system from the Canon website.

1.2 Precautions for Use

The following limitations apply to the use of this program. Before using the program, make sure that you understand these limitations.

- Do not try to use the printer while the firmware version update program is running. If a print job is executing, cancel the print job or wait for the job to finish before you execute the version update program.
- Never switch off the target printer while the firmware version update program is running.
- Before you start the firmware version update program, close any other applications that are running.
- Save this program onto the hard disk of the computer and run it from the hard disk.
- If the firmware version update fails while writing to the flash ROM, you may not be able to start the printer. If this happens, contact your dealer where you purchased the printer.

2. How to Use Firmware Update Tool V3.21 (for Mac OS)

Update the firmware by following the explanation below.

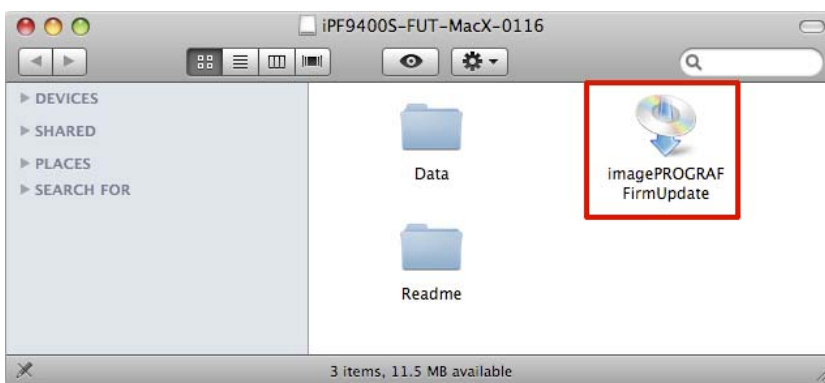
2.1 Installing Firmware Update Tool

Install the Firmware Update Tool.

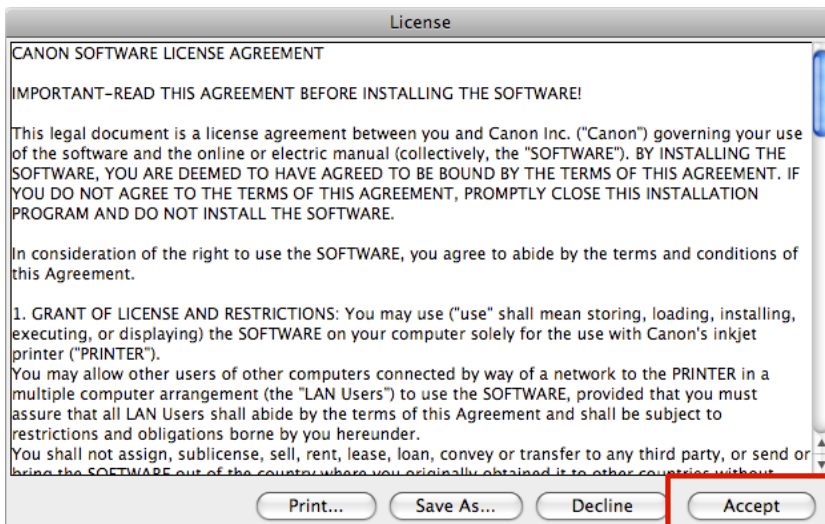
<Note>

- If you have already installed Firmware Update Tool V3.21, you do not need to install it again.
- Exit all other running programs before performing the installation.

1. Double-click [imagePROGRAF FirmUpdate] to start the installer.



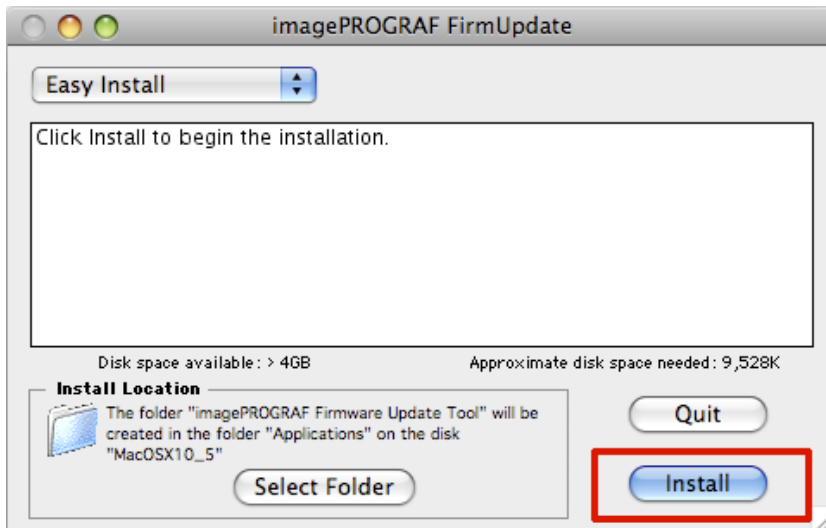
2. Click the [Accept] button.



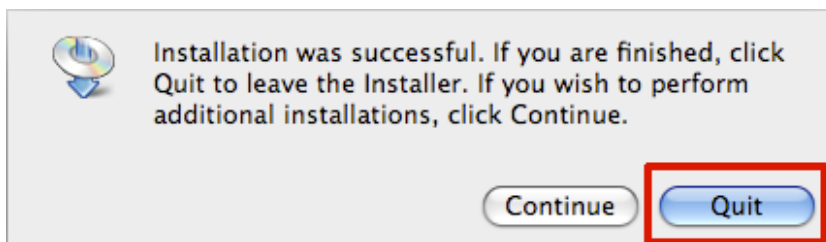
3. If required, click the [Select Folder] button and select the installation folder. Click the [Install] button.

<Note>

- The default installation folder is:
[Applications] > [imagePROGRAF Firmware Update Tool]



4. Click [Quit] to restart the computer.



Installing the Firmware Update Tool has finished.

2-2. Firmware Update Procedure

Update the firmware using the Firmware Update Tool.

1. Open a web browser and access the Canon website from a computer that can connect to the Internet.
2. Download the firmware corresponding to the printer you want to update from the Canon website.

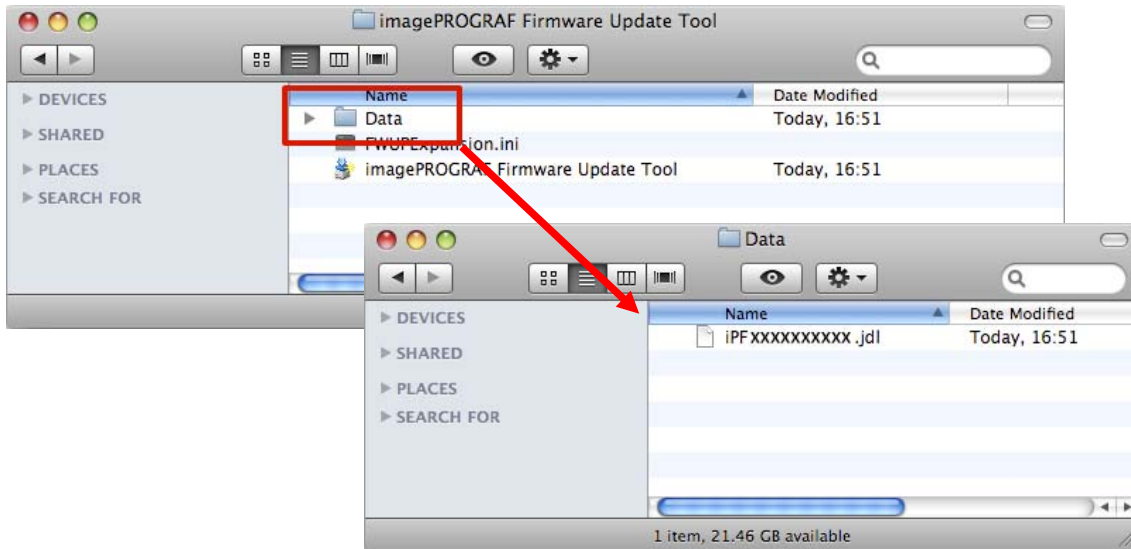
3. Store the downloaded firmware in the [Data] folder in the folder where the Firmware Update Tool is installed.

For example, if Firmware Update Tool is installed in

[Applications] > [imagePROGRAF Firmware Update Tool]

store the downloaded firmware in

[Applications] > [imagePROGRAF Firmware Update Tool] > [Data]



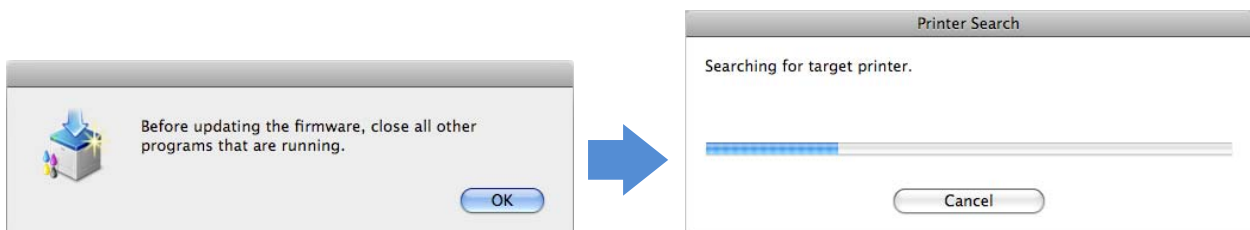
4. Exit all other running programs.

5. Double-click [imagePROGRAF Firmware Update Tool.app] from [Applications] > [imagePROGRAF Firmware Update Tool].

The Firmware Update Tool starts.

6. Click the [OK] button.

A printer search is performed.

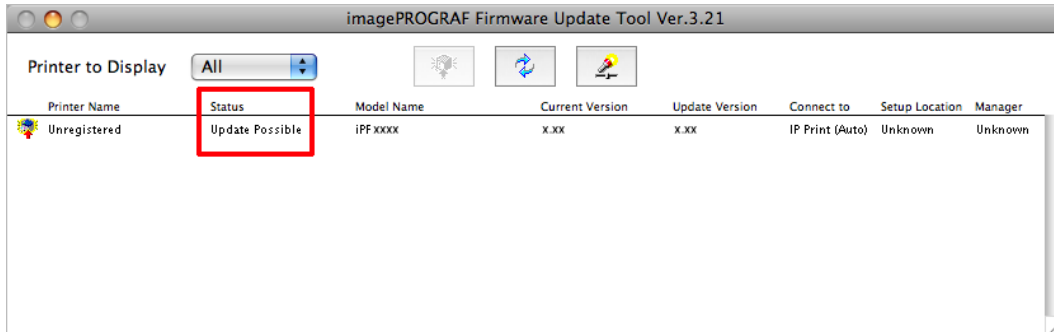


7. A list of printers that were found is displayed.

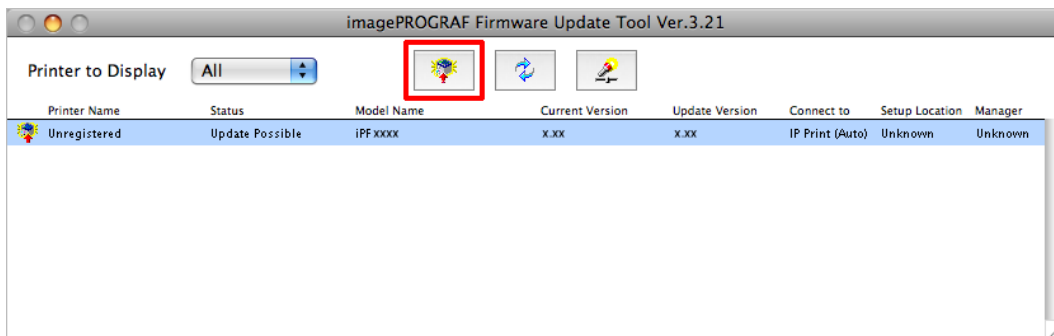
[Update Possible] is displayed in the [Status] field of printers where the firmware can be updated.

<Note>

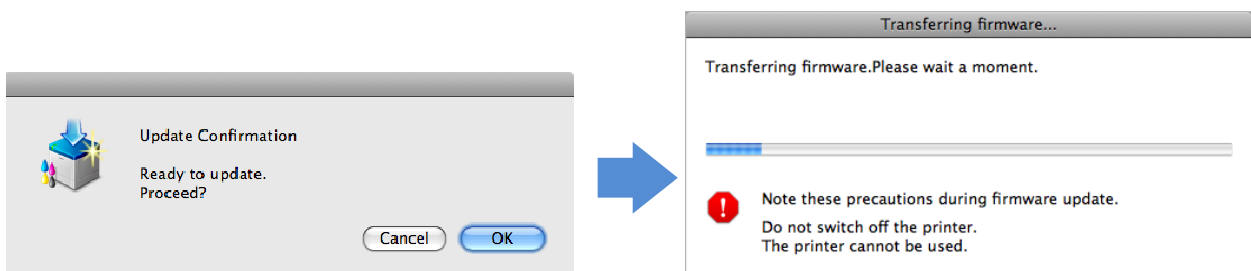
- You cannot overwrite the same version or downgrade versions.



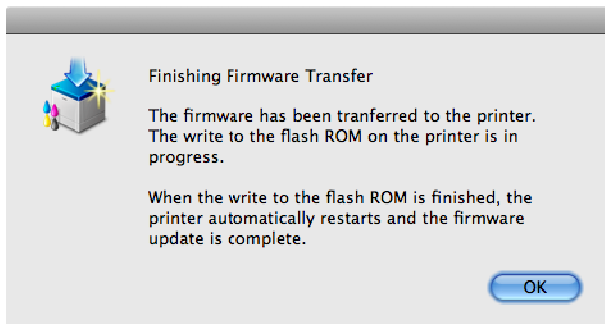
8. Click the printer to update the firmware of to select it, and then click the [Start Update] icon.



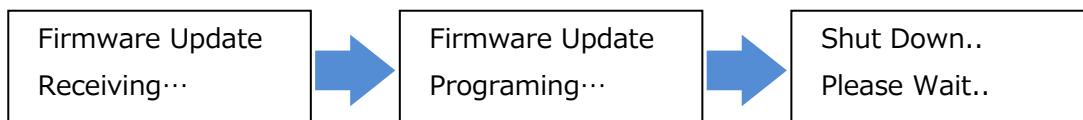
9. The [Update Confirmation] window is displayed. When you click the [OK] button, the firmware is transferred to the printer.



10. When transferring the firmware has finished, the following message is displayed. Click the [OK] button.



11. When the firmware is transferred, a message like the following is displayed on the printer Control Panel and the firmware is automatically overwritten. After the firmware has been overwritten, the printer restarts.



Once the printer has restarted, the firmware update is finished. Exit the Firmware Update Tool that is running on your computer.

2-3. If the Update Does Not Complete With the Given Procedure

If you are unable to perform an update without successfully, refer to the following explanations.

If the search is unable to find your printer

If the printer search fails, check that the interface cable is connected correctly and restart your printer and computer.

If you were unable to update the firmware

- An update is not needed in the following situations.
 - If the version of the firmware you are attempting to write is the same as the printer firmware
 - If the version of the firmware you are attempting to write is older than the printer firmware
- Check that the interface cable is connected correctly, restart your printer and computer, and then try performing the update again.

■ Trademarks

- Canon, the Canon logo, and imagePROGRAF are trademarks or registered trademarks of CANON INC.
- Mac, Mac OS and OS X are trademarks of Apple Inc., registered in the U.S. and other countries.

■ Copyright

- Duplication of all or part of the content of this manual without permission is prohibited.

■ Notices

- The computer screens shown in this manual may differ depending on your model and system environment.
- The content of this manual is subject to change without notice.